

# PTE Core Offline Practice Test

## Part 2: Reading

# Part 2: Reading

The question types included in this part of the test are.

| Reading question type                   | Number of questions | Time allowed  |
|---|---------------------|---------------|
| Reading and Writing: Fill in the Blanks | 5-6                 | 27-38 minutes |
| Multiple Choice, Multiple Answers       | 1-2                 |               |
| Reorder Paragraph                       | 2-3                 |               |
| Fill in the Blanks                      | 4-5                 |               |
| Multiple Choice, Single Answer          | 1-2                 |               |

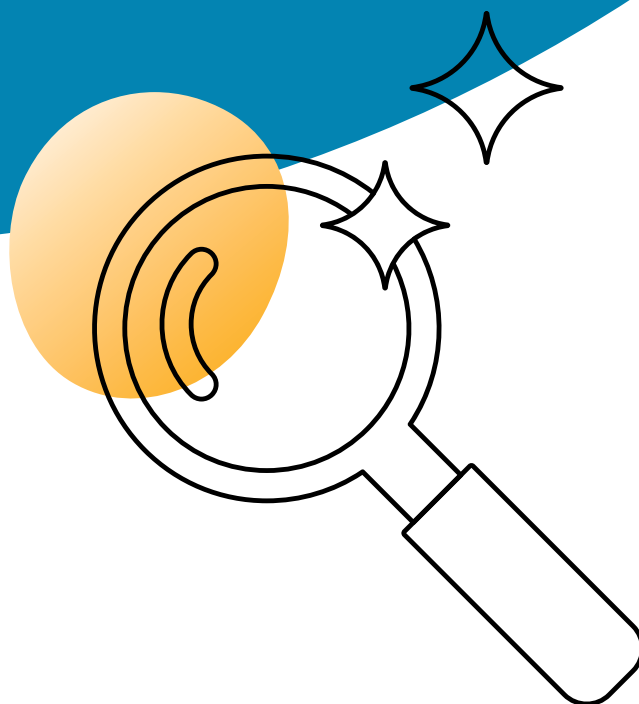
In this document you will find practice Reading questions and an Answer Key.

*Please note, the number of practice questions in this offline test does not reflect the number of questions in the actual PTE Core test.*

This offline test does not have the same functionality as the online test so answers will need to be handwritten, or you can use the editable response boxes in this document. If doing the test under timed considerations, only approximations can be applied.



# Part 2: Reading



## Reading and Writing: Fill in the Blanks – Question 1

The email below is from a student to a friend about renting accommodation. Some words are missing from the text. Click on each blank. A list of choices will appear. Select the appropriate answer choice for each blank.

Hi Susan,

How's your search for student accommodation going? I've started looking but I haven't found anything . Everything's so expensive, isn't it? Actually, I was wondering  you'd be interested in sharing a flat with me next term?  the accommodation that the university offers is for more than one person so I think we'll have nicer options to choose from if we decide to share. What do you think?

We've always got on well  each other and we spend a lot of time together anyway, so I think it might be a good solution. And you know that I'm a great cook, too! I know I'm not  at tidying up as you are, but I promise I'll keep the flat clean.

Anyway, let me know what you think. I'd really like to find a place soon.

Carly

Tick the words you think best fit the blanks in the box below:

| Gap 1                    |   |         | Gap 3                    |   |      | Gap 5                    |   |           |
|--------------------------|---|---------|--------------------------|---|------|--------------------------|---|-----------|
| <input type="checkbox"/> | A | still   | <input type="checkbox"/> | A | most | <input type="checkbox"/> | A | as good   |
| <input type="checkbox"/> | B | already | <input type="checkbox"/> | B | none | <input type="checkbox"/> | B | much good |
| <input type="checkbox"/> | C | ever    | <input type="checkbox"/> | C | any  | <input type="checkbox"/> | C | very good |
| <input type="checkbox"/> | D | yet     | <input type="checkbox"/> | D | many | <input type="checkbox"/> | D | better    |
| Gap 2                    |   |         | Gap 4                    |   |      |                          |   |           |
| <input type="checkbox"/> | A | how     | <input type="checkbox"/> | A | in   |                          |   |           |
| <input type="checkbox"/> | B | whether | <input type="checkbox"/> | B | to   |                          |   |           |
| <input type="checkbox"/> | C | that    | <input type="checkbox"/> | C | with |                          |   |           |
| <input type="checkbox"/> | D | even    | <input type="checkbox"/> | D | for  |                          |   |           |

## Reading and Writing: Fill in the Blanks – Question 2

The text below is from a blog post about exercise. Some words are missing from the text. Click on each blank. A list of choices will appear. Select the appropriate answer choice for each blank.

We all know that regular exercise is an important part of a healthy lifestyle, but before you start, for example, running or skiing, your body needs to be ready. Before any type of physical activity or training, I always do  simple exercises to help my body prepare. This usually takes about ten minutes, and I think it makes a huge difference to my training. For instance, before  my lower body, I start with a gentle walk and then I stretch my leg muscles.

Warming up like this also gets me in the right mental state to exercise because it encourages me to focus  my body and how I'm feeling. I'm not sure what scientists say about this but I know that exercise goals  more easily when people are feeling good.

And we also need to think about what we do after an exercise session. If you just stop without taking time to cool down and let your body recover, you might feel very sore the next day!

If you'd like to know more, I've created a short video  you can access by clicking the link here.

Tick the words you think best fit the blanks in the box below:

| Gap 1                    |   |             | Gap 3                    |   |               | Gap 5                    |   |       |
|--------------------------|---|-------------|--------------------------|---|---------------|--------------------------|---|-------|
| <input type="checkbox"/> | A | plenty      | <input type="checkbox"/> | A | about         | <input type="checkbox"/> | A | where |
| <input type="checkbox"/> | B | several     | <input type="checkbox"/> | B | in            | <input type="checkbox"/> | B | who   |
| <input type="checkbox"/> | C | lost        | <input type="checkbox"/> | C | to            | <input type="checkbox"/> | C | there |
| <input type="checkbox"/> | D | much        | <input type="checkbox"/> | D | on            | <input type="checkbox"/> | D | which |
| Gap 2                    |   |             | Gap 4                    |   |               |                          |   |       |
| <input type="checkbox"/> | A | to train    | <input type="checkbox"/> | A | achieve       |                          |   |       |
| <input type="checkbox"/> | B | train       | <input type="checkbox"/> | B | are achieving |                          |   |       |
| <input type="checkbox"/> | C | to training | <input type="checkbox"/> | C | can achieve   |                          |   |       |
| <input type="checkbox"/> | D | training    | <input type="checkbox"/> | D | are achieved  |                          |   |       |

## Multiple Choice, Multiple Answers – Question 1

Dear Staff,

As you know, this is an exciting period for our company. Customer feedback on our new products has been extremely positive, and soon we're going to enter the Asian market for the first time. We're confident that our products and excellent service will be just as popular there as they have been in other regions.

However, we need to adapt as we get bigger, and one way we can do that is by moving our head office to a more central location. For five years, our head office has been in Oakhedge because it was a cheaper place to do business, but now's the time to relocate to the capital.

This move will have several benefits. It will of course be more convenient because most of our products are manufactured in our Greenbridge factory which is just 15 km from the capital. Being nearer to our main factory is something the company needs. In addition, there are also environmental issues to think about. An exciting benefit of moving is that our new building is much more eco-friendly than our current one. It will help us cut waste and achieve our target of using 100% green energy, which is an important factor in our decision.

We know that this will involve significant changes for everyone, but we want you to know that wherever possible, we will offer you the opportunity to work from home if you cannot move to the capital.

Over the coming weeks, we will hold staff meetings to discuss the move in greater detail, and to answer any questions you may have.

Best wishes,

Andy Milton, Head of Human Resources

*Read the email from a company to its employees explaining an important change. Answer the question by selecting all the correct responses. You will need to select more than one response.*

The company has decided to move its head office because \_\_\_\_\_

- ☐ It wants to cut its costs.
- ☐ It is growing.
- ☐ It wants to change to different activities.
- ☐ It is also moving its main factory.
- ☐ It wants to cause less pollution.

Tick your answer choices.

## Multiple Choice, Multiple Answers – Question 2

The Brookland Trust would like to take this opportunity to thank you for your kind support. You are helping us make a real difference in the community.

Without the food items you donate, we couldn't run our community kitchen which prepares healthy, warm meals for people in need. We serve hundreds of people every week so we can never have enough pasta or rice! One thing we request you not to send us is canned food items such as soup or tomatoes as we have plenty of those, and we have limited space to store them. We currently have plenty of fresh fruit and vegetables, too.

If you'd prefer to offer your time instead, we're always looking for volunteers to help us with cooking. It's amazing what meals we can create in our kitchen, even though it's fairly basic!

And as well as the community kitchen we run every day, the Brookland Trust also has a winter programme that offers extra support to people during the cold weather. One of the things we do is provide people with warm clothing, such as jumpers, coats and gloves. We'd be very grateful for any good-quality items like this if you'd like to send them to us because we can put them to good use.

*Read the text from a charity website to people who want to help the charity. Answer the question by selecting all the correct responses. You will need to select more than one response.*

Which items does the charity ask people to give?

- ☐ Pasta and rice
- ☐ Tins of food
- ☐ Clothing
- ☐ Cooking equipment
- ☐ Fresh fruit and vegetables

Tick your answer choices.

### Reorder Paragraph – Question 1

*The text boxes on the left are sentences in a paragraph from a blog post about travelling on your own. They are in a wrong order. Put the text boxes in the correct order by dragging them from the left panel to the right panel.*

| Source   | Target |
|--|--------|
| However, I soon realised that there were some great advantages to this type of travel.   |        |
| At the same time, it also encouraged me to make the effort to talk to new people, and I really enjoyed that.   |        |
| For instance, it was so lovely to spend the whole day relaxing on the beach instead of doing all the active things my friends and family usually want to do! |        |
| When I decided to take a holiday without my friends or family, I felt a bit nervous.   |        |
| Perhaps the main one was I could do whatever I wanted without thinking about other people's preferences.   |        |

**Write 1-5 next to each sentence to indicate the order you think is correct.**

### Reorder Paragraph – Question 2

*The text boxes on the left are sentences in a paragraph from a magazine article about staying cool in hot weather. They are in a wrong order. Put the text boxes in the correct order by dragging them from the left panel to the right panel.*

| Source   | Target |
|--|--------|
| Staying cool starts with drinking enough liquids, especially water with ice.   |        |
| While hot, sunny weather can mean fun days at the beach, many people find high temperatures very hard to deal with.                    |        |
| But if you have to be outside, wear loose, light clothes and don't forget your sunglasses and a cap for extra protection from the sun! |        |
| If possible, it's also a good idea to avoid going out during the hottest part of the day, between 11 a.m. and around 2 p.m.            |        |
| The good news, though, is that you can take some steps to feel more comfortable in the heat.   |        |

**Write 1-5 next to each sentence to indicate the order you think is correct.**



### Fill in the Blanks – Question 1

*The text below is from a restaurant review in a magazine. Some of the words are missing. Drag words from the box below to the appropriate place in the text. To undo an answer choice, drag the word back to the box below the text.*

Many things can make a restaurant popular with customers. For some, getting great  is important because they like feeling welcome and relaxed. The Lemon Tree does this very well. The head  gave us excellent menu suggestions and moved us to a quieter area when we complained about the . As for the meal, The Lemon Tree serves lovely food using  ingredients people don't expect. For instance, the fruit and chocolate pizza was amazing!

manager

unusual

noise

dishes

service

traditional

waiter

**Write your answers in the blanks in the text or note your choice of words in the box below:**

### Fill in the Blanks – Question 2

*The text below is from a product information guide for a phone. Some of the words are missing. Drag words from the box below to the appropriate place in the text. To undo an answer choice, drag the word back to the box below the text.*

The X70 Pro-Phone is our best ever phone. The sound quality is brilliant, especially when the phone is connected to . All X70 Pro-Phone customers have free access to our website where you can listen to albums by your favourite . And you can also access them wherever you go if you  them onto your phone.

Another great function of the X70 Pro-Phone is its camera, which takes amazing  whether you are new to photography or an expert!

download

players

screen

use

artist

images

speakers

**Write your answers in the blanks in the text or note your choice of words in the box below:**

## Multiple Choice, Single Answer – Question 1

Come to the Bay Centre on June 1st to celebrate our opening!

The day will include plenty of surprises and fun, like our photo competition where you can win a camera or other cool things. Simply find a staff member wearing a Bay Centre T-shirt, take a selfie with them, and share it on our website.

But the fun doesn't end at our welcome event. For the whole month, the Bay Centre cinema is holding a film festival. Buy one cinema ticket, and get the second free. And don't miss the amazing cafés and restaurants in the Food Court. Show a valid cinema ticket to get a free drink!

*Read the text from a flyer advertising a new shopping centre. Answer the multiple-choice question by selecting the correct response. Only one response is correct.*

Which of these is only available during the Bay Centre's opening day event on June 1st?

- ☐ Opportunities to win prizes
- ☐ Discounts on meals at the Food Court
- ☐ Two-for-one cinema tickets
- ☐ Free T-shirts for shoppers

**Tick your answer choice.**

## Multiple Choice, Single Answer – Question 2

For eighty years, the Greenridge Open has been one of the most important competitions in the tennis calendar. This year's event has been the best yet. Fans were excited to see Will Parker, the young Australian player. Many didn't expect him to do well as this was his first competition in six months due to a knee injury. However, Parker was faster, fitter and stronger than ever. Of course, he still needed more match practice after such a long absence. However, he and his training team should be pleased with how he played at the Open. And the event certainly benefitted from the extra media interest Parker's return attracted.

*Read the text from a magazine about sport. Answer the multiple-choice question by selecting the correct response. Only one response is correct.*

What is the text about?

- ☐ Public opinions about a sports event
- ☐ A tennis player's training routine for a sports event
- ☐ A tennis player's performance in a sports event
- ☐ The history of a famous sports event

**Tick your answer choice.**

# Part 2 Reading:

## Answer Key

### Reading and Writing: Fill in the Blanks – Question 1

Hi Susan,

How's your search for student accommodation going? I've started looking but I haven't found anything **yet**. Everything's so expensive, isn't it? Actually, I was wondering **whether** you'd be interested in sharing a flat with me next term? **Most** of the accommodation that the university offers is for more than one person so I think we'll have nicer options to choose from if we decide to share. What do you think?

We've always got on well **with** each other and we spend a lot of time together anyway, so I think it might be a good solution. And you know that I'm a great cook, too! I know I'm not **as good** at tidying up as you are, but I promise I'll keep the flat clean.

Anyway, let me know what you think. I'd really like to find a place soon.

Carly

#### Explanation

1. **yet:** 'yet' in a negative present perfect sentence shows that something hasn't happened but we think it should happen soon.
2. **whether:** 'whether' in a sentence shows that there is a choice to make.
3. **most:** 'most of' with a noun shows that we are talking about the largest part of something.
4. **with:** the phrasal verb 'get on well with' means that you have a good relationship with someone.
5. **as good:** the phrase 'not as + adjective + as' compares two things.

### Reading and Writing: Fill in the Blanks – Question 2

We all know that regular exercise is an important part of a healthy lifestyle, but before you start, for example, running or skiing, your body needs to be ready. Before any type of physical activity or training, I always do **several** simple exercises to help my body prepare. This usually takes about ten minutes, and I think it makes a huge difference to my training. For instance, before **training** my lower body, I start with a gentle walk and then I stretch my leg muscles.

Warming up like this also gets me in the right mental state to exercise because it encourages me to focus **on** my body and how I'm feeling. I'm not sure what scientists say about this but I know that exercise goals **are achieved** more easily when people are feeling good.

And we also need to think about what we do after an exercise session. If you just stop without taking time to cool down and let your body recover, you might feel very sore the next day!

If you'd like to know more, I've created a short video **which** you can access by clicking the link here.

### Explanation

1. **several:** 'several' before plural countable nouns like 'exercises' means a quantity which is more than just a few, but not a large number.
2. **training:** after 'before', we usually use a gerund ('training').
3. **on:** the verb 'focus on' means to 'pay attention to' something.
4. **are achieved:** the present simple passive ('are achieved') is used to show that 'goals' is the focus of the sentence.
5. **which:** 'which' is used in a defining relative clause to refer to a thing ('a short video').

### Multiple Choice, Multiple Answers – Question 1

**Question:** The company has decided to move its head office because \_\_\_\_\_

**Incorrect:** The email says that the company chose to do its business in Oakhedge because it was cheap, but now it has decided to move. The text does not say that this move will reduce its costs.

**Correct:** The email says that the company needs to make changes as it gets bigger, meaning that the decision was taken because it is growing.

**Incorrect:** Although the email mentions 'new products' and starting to do business in a new region, these activities are in addition to the company's other business activities, so the company has not decided to change to different activities.

**Incorrect:** The email does not say that the company is planning to move its main factory. Instead, the email says that the company has decided to move its main office to the capital because the factory where most of its products are manufactured is only 15 km away.

**Correct:** The email says that the company also thought about 'environmental issues'. The email says moving to a new building will help the company 'cut waste and achieve our target of using 100% green energy'. It says this is 'an important factor in our decision'.

### Multiple Choice, Multiple Answers – Question 2

**Question:** Which items does the charity ask people to give?

**Correct:** The writer says the charity 'can never have enough pasta or rice', which means the charity always needs these items.

**Incorrect:** The writer says people should not send tins of food because the charity has 'plenty of those' and has 'limited space to store them'.

**Correct:** The writer asks people to send items of clothing 'such as jumpers, coats and gloves' so that the charity can put these items 'to good use'.

**Incorrect:** Although the writer says that the charity only has a 'basic' kitchen, the text does not say that the charity requires cooking equipment.

**Incorrect:** The writer says the charity has 'plenty of fresh fruit or vegetables' at the moment. This means the charity does not require these items.

### Reorder Paragraph – Question 1

**Correct**

4, 1, 5, 3, 2

When I decided to take a holiday without my friends or family, I felt a bit nervous. However, I soon realised that there were some great advantages to this type of travel. Perhaps the main one was I could do whatever I wanted without thinking about other people's preferences. For instance, it was so lovely to spend the whole day relaxing on the beach instead of doing all the active things my friends and family usually want to do! At the same time, it also encouraged me to make the effort to talk to new people, and I really enjoyed that.

### Reorder Paragraph – Question 2

#### Correct

2, 5, 1, 4, 3

While hot, sunny weather can mean fun days at the beach, many people find high temperatures very hard to deal with. The good news, though, is that you can take some steps to feel more comfortable in the heat. Staying cool starts with drinking enough liquids, especially water with ice. If possible, it's also a good idea to avoid going out during the hottest part of the day, between 11 a.m. and around 2 p.m. But if you have to be outside, wear loose, light clothes and don't forget your sunglasses and a cap for extra protection from the sun!

### Fill in the Blanks – Question 1

#### Answers

Many things can make a restaurant popular with customers. For some, getting great **service** is important because they like feeling welcome and relaxed. The Lemon Tree does this very well. The head **waiter** gave us excellent menu suggestions and moved us to a quieter area when we complained about the **noise**. As for the meal, The Lemon Tree serves lovely food using **unusual** ingredients people don't expect. For instance, the fruit and chocolate pizza was amazing!

#### Explanation

1. **service:** in a restaurant, good service can make customers feel 'welcome and relaxed'
2. **waiter:** in a restaurant, it is the waiter's job to make suggestions and try to help customers if they complain about something; 'head waiter' is also a common collocation
3. **noise:** the writer says that they moved to a 'quieter' part of the restaurant, which means they weren't happy about the noise
4. **unusual:** the writer gives the example of a 'fruit and chocolate pizza' to show that The Lemon Tree serves food which includes unusual ingredients because we wouldn't expect pizza to contain chocolate and fruit

### Fill in the Blanks – Question 2

#### Answers

The X70 Pro-Phone is our best ever phone. The sound quality is brilliant, especially when the phone is connected to **speakers**. All X70 Pro-Phone customers have free access to our website where you can listen to albums by your favourite **artists**. And you can also access them wherever you go if you **download** them onto your phone.

Another great function of the X70 Pro-Phone is its camera, which takes amazing **images** whether you are new to photography or an expert!

#### Explanation

1. **speakers:** speakers improve the sound quality when we are listening to music on a phone
2. **artists:** we can use the word artists to refer to bands or singers that make music
3. **download:** when we download music onto a phone, it means we can access it on our phone
4. **images:** we can use a camera to take images

### Multiple Choice, Single Answer – Question 1

**Question:** Which of these is only available during the Bay Centre's opening day event on June 1st?

**Correct:** The writer says the opening day event on June 1st will include a photo competition where people can win prizes.

**Incorrect:** Although the writer mentions an offer to get a free drink at the Food Court, this offer is available for the whole month, not just during the opening day event, and there is no information about discounts on meals.

**Incorrect:** The writer says that the special offer for two-for-one cinema tickets will continue throughout the whole month of June, so it is not only available during the opening day event.

**Incorrect:** The writer says that staff members will wear Bay Centre T-shirts, but does not say that shoppers can receive T-shirts during the opening day event.



### Multiple Choice, Single Answer – Question 2

**Question:** What is the text about?

**Incorrect:** The writer says that some fans had opinions about a player, but not about the event.

**Incorrect:** Although the writer mentions that a tennis player was 'faster, fitter and stronger than ever', the text does not give any information about how the player trained.

**Correct:** The text is mainly about how Will Parker performed at the Greenridge Open tennis competition.

**Incorrect:** Although the writer mentions that the Greenridge Open is a famous tennis event that has existed for 'eighty years', the text does not focus on the history of the event.



# PTE Core Offline Practice Test

## Part 2: Reading

